



Derive Value From **Excellence**

People



Services



Solutions

Technology Service That work for you

CONNECTING YOUR BUSINESS TO THE TECHNOLOGY RESOURCES YOU NEED

GCE SOLUTION'S OFFERINGS

GCE's wide spectrum of IBM Rational offerings has been designed to affirm entire cycle of SCM Implementation. GCE offers services, consultants, solutions and enabling technologies that allow organizations to increase the effectiveness, competency and value of technology without substantial increases in management overhead. Our strategies, implementation and consulting services help customers to harness business benefits through effective and efficient resourcing and technology solutions consulting.

IBM RATIONAL SERVICES

- Cost Effective Strategic Global Resourcing
- Cost Effective Strategic Global Outsourcing (Onsite / Offsite / Offshore)
- IBM Rational Product Sales
- IBM Center of Excellence
- IBM Rational Customized Training Services
- IBM specific Infrastructure Management Services
- IBM specific Implementation services
- End to End Project Deliveries
- Asset and Resource Optimization
- IBM Rational specific IT Consulting Services

TECHNOLOGY SOLUTIONS

ACE: Accelerated Configuration Management for Enterprise

ACE is a new buzzword introduced by GCE. The term stands out for itself, an accelerated way of implementation of Configuration Management practice in an industry. This approach provides you the end-to-end execution of CM implementation and strategies to an enterprise in an actuated manner. It allows enterprise to organize complex and interwoven software with more easy and reliable control.

ACE could be defined broadly as a paced methodology for Configuration Management, Change Management and Release Management implementation in an industry from requirement phase to deployment phase that involves usage of proper toolset, readiness checks, standards and practices, applications interdependencies, visibility of changes and holistic approach.

FLEXIBLE SOLUTIONS FOR YOUR BUSINESS NEEDS

ACE OFFERINGS

ACE is a solution framework with following components

- End to End CM implementation Methodology
- CM Implementation Risks and Mitigation techniques
- Product Specific implementation approaches
- Sample CM project definitions
- SCM Project Design Guidelines
- SCM Architecture Guidelines
- SCM Estimation Guidelines
- Predefined SCM plan templates
- SCM Requirement Gathering Metamodel
- SCM Implementation Best Practices
- Illustrative Implementations
- Product Specific implementation approaches
- SCM Vendor Evaluations

ACE Value Differentiators

ACE promises to thrive the business goals and continuity with its paced implementation approach to manage changes to applications across different technology environment. It also ensures that organizations follow the defined standards, policies and methodologies



THOUGHT LEADERSHIP @ GCE SOLUTIONS

IBM CENTER OF EXCELLENCE (IBM COE)

Research at the IBM Center of Excellence (IBM CoE) aims to empower GCE Solutions and customers with competencies along various dimensions of IBM tools and technologies

IBM CoE is an internal GCE team incorporated by individuals with the diversified technical, domain, business and analytical expertise in IBM tools and related technology landscape.

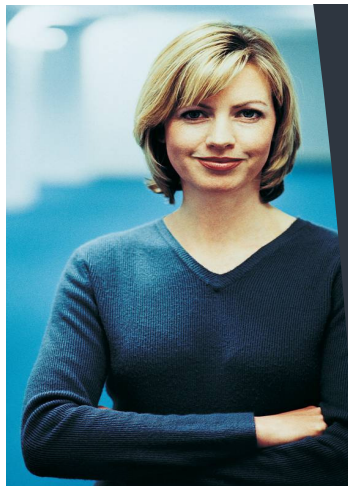
IBM CoE endeavors to develop efficient and cost effective solutions to help enterprises overcome barriers to effective IBM tools and technologies implementations, Frameworks, methodologies, tools and solutions are being developed to improve efficiency and time to market for IBM Technologies implementation for customers. GCE IBM CoE is committed for setting direction in various constituents of IBM Tools like Configuration management tools, Source code management tools, Integrated Development Environments, Testing Solutions, Requirement Management tools, Software Modeling tools, Information Management tools.

IBM CENTER OF EXCELLENCE INVOLVES IN

- Product Evaluation and Product fitment analysis
- Competency development
- Best Practices for different IBM tools
- Standards and Compliances
- Centralized Knowledgebase
- IBM Tool Strategy and Roadmap
- IBM Project Risk and Mitigation Plans
- Design and Architecture Reviews
- Shared services and Infrastructure
- Prescriptive Architectures
- Training and Expertise Enhancement
- Centralized structure Design and Implementation for IBM Tools
- Estimation Models
- Methodologies
- Trend Analysis
- Proof of Concepts
- Implementation Strategies
- CM Solution Roadmaps
- Project Reviews
- Vendor Analysis
- Vendor Management
- Alliance Management
- Solution Frameworks
- Project Definitions
- CM Process Definitions

HIGH LEVEL FOCUS AREAS

- Evaluating the IBM and related products based on extensive study and expertise in IBM and related tools.
- Broaden the IBM technology focus by extensive research in problem areas.
- Project consulting in IBM tools and Technologies
- IP (Frameworks, Methodologies, Best Practices, Prescriptive Architectures, Technology Roadmap, Solutions, Implementation approaches) creation
- Identifying the trends in Configuration management, Requirement Management, Source Code Management, Software Modeling, Information Management space and market survey to understand business demands. Identifying market issues and proposing the right solutions.
- It also performs significant role in knowledge dissemination, end user training and scaling the customer's overall IBM technologies skills and capabilities.



Technology Areas

Rational Suite of Products

Analysis, Modeling, Design & Construction

- Rational Application Developer
- Rational Software Architect
- Rational Asset Manager Y
- Rational Professional Bundle Y

Requirement Change Configuration & Release Management

- Doors
- Rational Requisite Pro
- Rational Build Forge
- Rational ClearCase
- Rational ClearQuest

Process, Project & Portfolio management

- Rational Method Composer
- Rational Portfolio Manager
- Rational Team Unifying Platform

Software Quality Management

- Rational Test Manager
- Rational Functional Tester
- Rational Manual tester
- Rational Performance Tester
- Rational Robot
- Rational Test RealTime

Information Management

Database Servers

- DB2
- Informix
- IMS Tools
- DB2 for Z Series

Data Warehouse and Business Intelligence

- DB2 Warehouse
- Balanced Warehouse
- Cognos

Enterprise Content Management

- FileNet Content Manager
- FileNet Image Manager
- FileNet Content Services
- FileNet Business Process Manager
- FileNet eForms
- DB2 Content Manager

Lotus Suites of Products

- Lotus Collaborations Suite
- Lotus Domino Document Manager
- Workplace WCM
- Lotus Notes & Lotus Workflow

Tivoli Suite of products

- Tivoli Access Manager
- Tivoli Identity manager
- Tivoli Directory Server

Service

Offerings

About US

Headquartered in **Bloomington IL**, **GCE Solutions** is a technology consulting and IT services organization specialized in strategic global resourcing, industry-specific solutions and application development services.

We provide **most proficient IT services and professionals** with the boarder **technology, domain and industry** expertise to help our customers in their success journey

GCE Solutions offers value differentiators to customers through a confluence of thought leadership, process excellence, proven solutions and broader span of services.

GCE has more than **15 highly satisfied** customers with **more than 80% repeat business**. We are proud to have more than **25% of our customer base as fortune 500** organizations

- ◆ **Application Development and Maintenance**
- ◆ **Enterprise Quality Services**
- ◆ **System Integration**
 - ◆ Business Intelligence and Data Warehousing
 - ◆ Enterprise Content Management
 - ◆ Enterprise Information Portal
- ◆ **Center of Excellence**
- ◆ **Training Services**
- ◆ **Infrastructure Management Services**
- ◆ **Strategic Global Resourcing**
- ◆ **Strategic Global Outsourcing**
- ◆ **Technology Consulting**
- ◆ **Business Consulting**
- ◆ **Technology Domains**
 - ◆ Configuration Management
 - ◆ Change Management
 - ◆ Requirement Management
 - ◆ Build and Release management
 - ◆ Clinical Data Management
 - ◆ Enterprise Content Management
 - ◆ Data warehousing
 - ◆ Business Intelligence
- ◆ **Application Development**
 - ◆ Java J2EE
 - ◆ .Net



11770, Haynes Bridge Road
Suite# 205-108
Alpharetta GA 30004
706-522-4736 PH
www.gcesolutions.com

1717 R.T. Dunn Drive
Suite# 201-1
Bloomington IL 61701
309- 807-5879
www.gcesolutions.com

GCE Solutions Pvt Ltd.
41/5-B Dayal Bagh
Ambala Cantt, Haryana
India-133001
www.gcesolutions.com